



# Period Garden Maisonette with Direct Access to Communal Gardens

LONG LEASE | DIRECT ACCESS TO COMMUNAL GARDENS | Rare 1,424 sq ft South Kensington Garden Maisonette

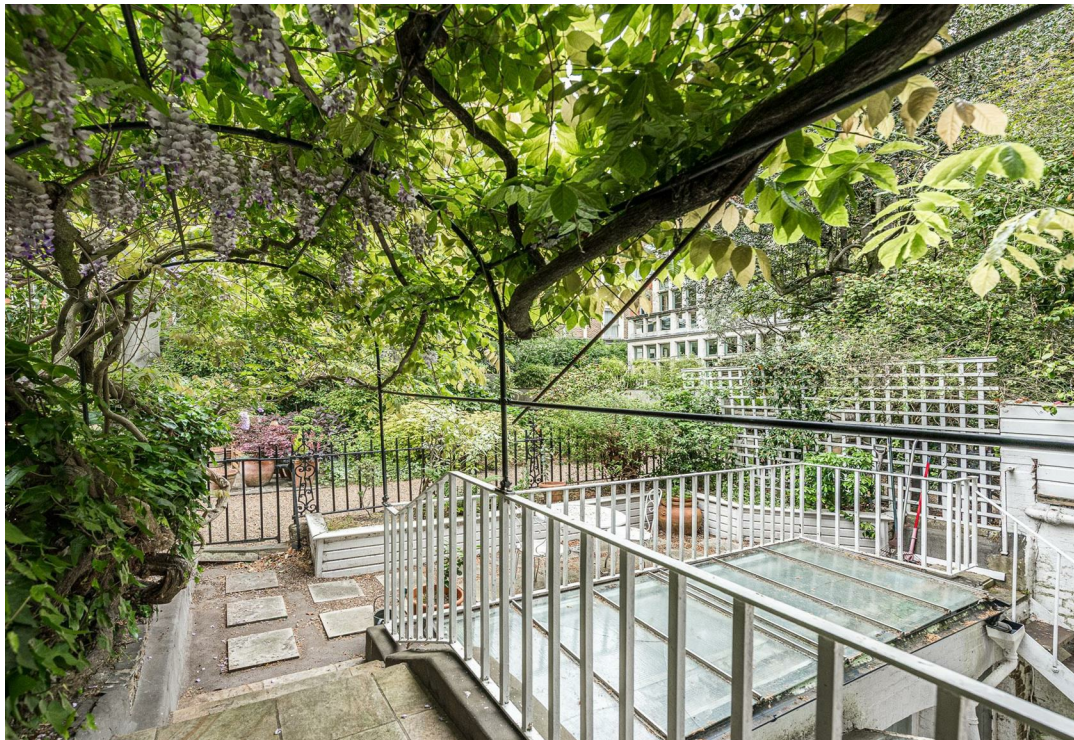
An elegant period garden maisonette extending to approximately 1,424 sq ft (132.27 sq m), positioned on one of South Kensington's most prestigious garden squares with direct access to own garden and beautifully maintained communal gardens.

Arranged over two floors, this substantial property offers impressive ceiling heights, excellent proportions, and a wealth of original Victorian character throughout, presenting a rare opportunity to create an exceptional central London home with outstanding potential to modernise and extend at lower ground level subject to the necessary consents.

The raised ground floor features a magnificent bay-fronted reception room overlooking the gardens, separate kitchen, guest cloakroom, and useful storage. The lower ground floor provides two double bedrooms, including a principal bedroom with en-suite bathroom, together with a further bathroom and additional reception/dining room which could also serve as a third bedroom, guest suite, or home office.

Wetherby Gardens is ideally located moments from Gloucester Road underground station, together with the outstanding restaurants, boutiques, and amenities of South Kensington, Kensington High Street, and Chelsea.

Having remained within the same family for over 50 years, this is a rare opportunity to acquire a substantial garden maisonette with exceptional potential in prime SW5.





## ACCOMMODATION

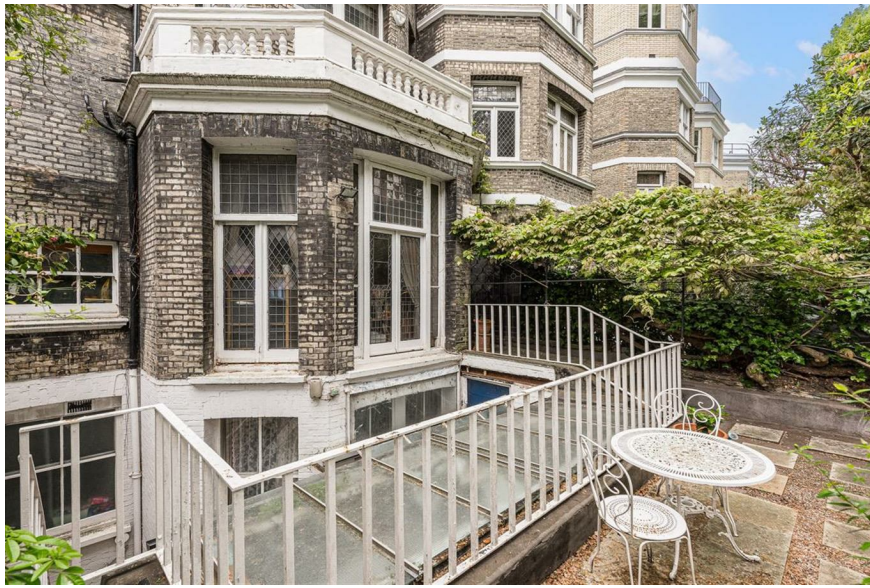
Raised Ground Floor: Entrance hall, magnificent bay-fronted reception room with direct access to own communal gardens, separate kitchen, guest cloakroom, and useful storage.

Lower Ground Floor: Principal bedroom with en-suite bathroom, second double bedroom, further bathroom, large additional reception/dining room with potential for 3rd bedroom or home office, and further storage.

## LOCATION

Wetherby Gardens is one of South Kensington's most sought-after garden squares, ideally positioned moments from Gloucester Road underground station and within easy reach of the outstanding restaurants, boutiques, cafés, and cultural amenities of South Kensington, Kensington High Street, and Chelsea. This refined residential setting combines elegant period architecture with the convenience and lifestyle of prime central London living.





**CONTACT US TO ARRANGE A VIEWING**

## PROPERTY INFORMATION

**Property Type:** Maisonette

**Construction Materials:** Brick

### Utilities:

Electricity supply: Mains Supply

Water supply: Mains

Sewerage: Mains

Heating: Gas Mains

**Broadband/ Internet connection:** Fttc

**Mobile Signal Coverage:** Please check

Ofcom Mobile Checker

**Broadband speed:** Please check Ofcom

Broadband Checker

**Parking Arrangements:** Street Parking

Permit Required

## Terms

**Guide Price: £1,800,000**

**Tenure:** Long Leasehold

**Lease:** from 25/12/1997 for 125 years

**Service Charge:** £1603.89 per quarter

**Ground Rent:** £200 per annum

**Ground Rent Review Period:** 25 years

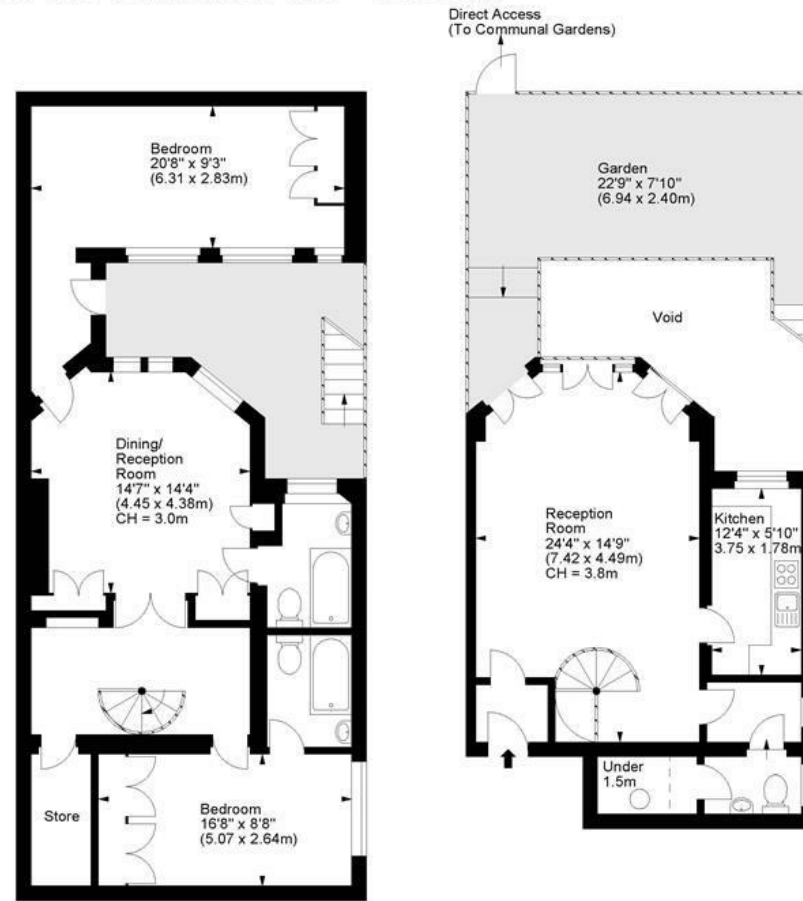
**Local Authority:** The Royal Borough of  
Kensington and Chelsea

**Council Tax Band:** G

## Wetherby Garden, SW5



Approx. Gross Internal Area 1424 Sq Ft - 132.29 Sq M  
Approx. Gross External Area 390 Sq Ft - 36.23 Sq M  
Approx. Gross Total Area 1814 Sq Ft - 168.52 Sq M



Lower Ground Floor

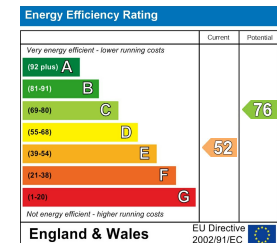
Raised Ground Floor

For illustration purposes only. Not to scale.  
All measurements are taken and shown at floor level.  
www.r3photography.co.uk © Photography / Floor Plans / Lease Plans / EPCs



## FEATURES

- Approx. 1,424 sq ft (132.27 sq m) + 390 sq ft (36.23 sq m)
- Direct access to own garden and communal gardens
- Prestigious South Kensington garden square
- Elegant period maisonette
- Flexible 2/3 bedroom accommodation
- Magnificent bay-fronted reception room
- Excellent ceiling heights
- Two bathrooms plus guest cloakroom
- Exceptional potential to modernise & extend subject to the necessary consents
- Moments from Gloucester Road underground station



**WHITE**  
ESTATES

0207 370 4343

www.whiteestates.com

sk@white-estates.co.uk

176 Old Brompton Road, London, SW5 0BA